

**COMPONENTS AND BOXES
FOR PACKAGING**



TECHNICAL CATALOGUE



DICTIONARY

2

CONSTRUCTION SOLUTIONS

3

BOARDS

5

CORNERS

6

HANDLES

9

CLOSINGS

13

PROFILES U

14

PROFILES H

17

FRAMES

19

ADDITIONAL ELEMENTS

20

WEIGHT AND PACKAGING

23

PP

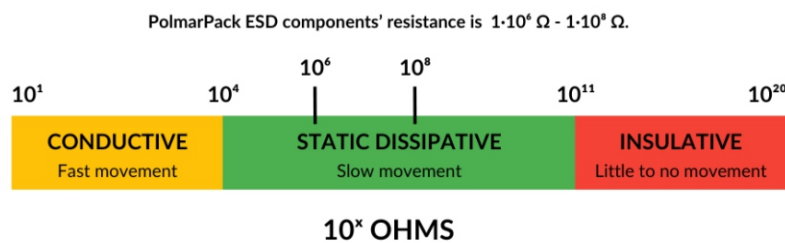
PP (Polypropylene) - a plastic from the polyolefin group, characterized by its thermoplastic nature, allowing for easy molding through extrusion or injection molding technology. Its notable advantages include recyclability, chemical resistance, strength, and impact resistance. The standard product's colour is black.

ESD (Electrostatic Discharge) - a special mixture of standard PP and additives (mainly high-quality black carbon) modifying the electrostatic properties.



To counter these risks, ESD materials aim to mitigate electrostatic charging and reduce discharge damage. Effective ESD management is critical for crucial electronic system reliability and preventing damage.

The ESD properties of the components we produce are subjected to inspection and have the relevant identification markings.



TPE

TPE - is a thermoplastic elastomer, so-called artificial rubber. Its usage in packaging is beneficial due to its anti-slip features, pleasant touch sensation, and ease of assembly. This material is recyclable alongside PP (polypropylene), with a standard hardness typically around 75 ShA.

PVC

Hard PVC - a synthetic polymer from the vinyl polymer group - polyvinyl chloride. It is characterized by high rigidity and strength. PVC profiles can be welded for constructing complete frames. It can be recycled. It must not be combined or mixed with PP or other thermoplastics. The standard color is grey. It can be tinted in other colors.

Soft PVC - is plasticized polyvinyl chloride. This process makes it flexible. It is harder than TPE but more tear-resistant. It can be recycled. When disposing or recycling, do not mix with PP or TPE. Moreover, can come in a transparent version or can be dyed in any color.

PPcoex

Coex is a material applied to the profile through a co-extrusion process, where TPE is added to PP material. This combination imparts non-slip properties and enhances the touch experience. The material can be recycled together with PP

PPreflex

Reflex is a dye incorporated into the production of PP profiles.

Reflex profile is characterized by its ability to reflect light, facilitating its detectability even in low visibility conditions. Its primary purpose is to aid in identifying the packaging to which the profile has been applied.

INTERMEDIATE PACKAGING MADE FROM 5 MM BOARD

We make complete packaging from hollowcore panels by supplying them with our own U and H profiles for edge protection and handles. We make inserts and trays for intermediate boxes.

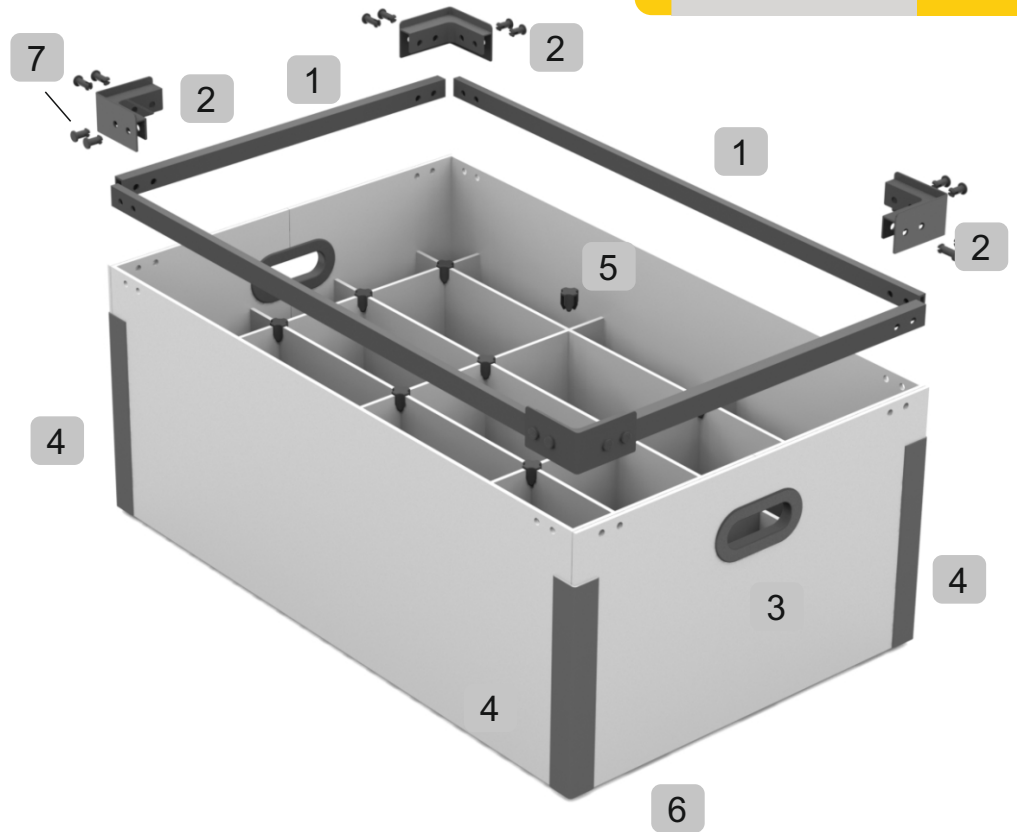
BK/5/PP

PP

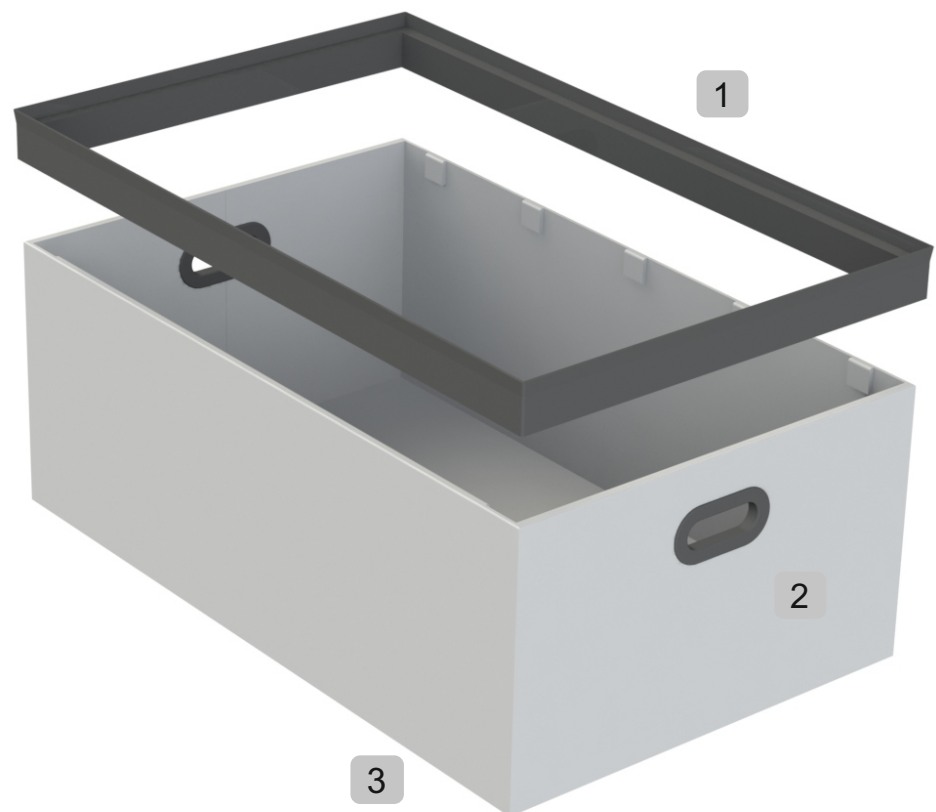
BK/5/ESD

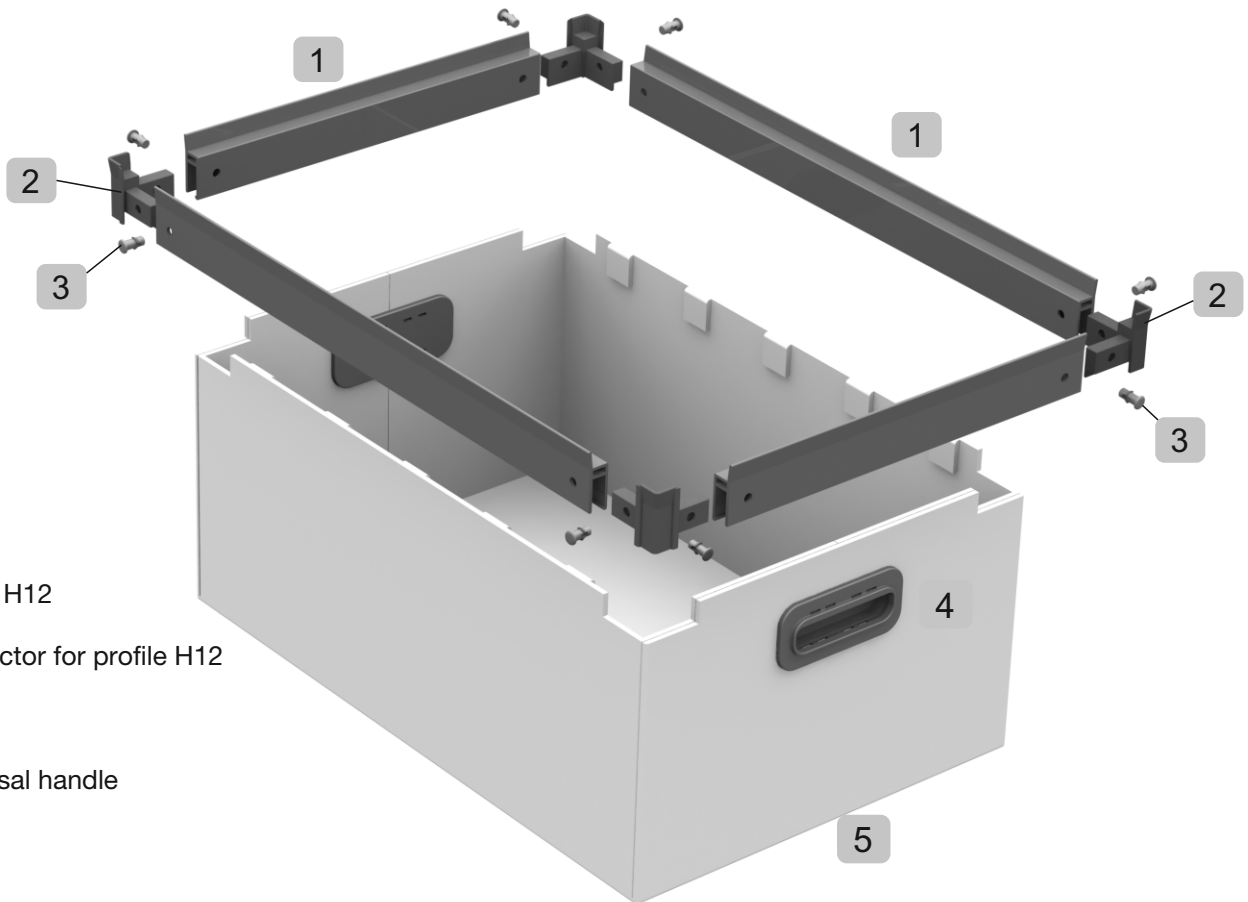


- 1 Profile U (U3A, U5A, U5C, U7A, U10B, U10C)
- 2 Corner for profile U10
Asymmetric corner to connect profile U5 z U10
Symmetric corner to connect profile U5 z U5
Foldable corner to connect profile U10
- 3 Handle
- 4 Angle PP
- 5 Positioning element
- 6 Box
- 7 Rivet



- 1 Frame
- 2 Handle
- 3 Box





- 1 Profile H12
- 2 Connector for profile H12
- 3 Rivet
- 4 Universal handle
- 5 Box

INTERMEDIATE PACKAGING MADE FROM 10 MM BOARD

We manufacture customised containers/boxes made from 10 mm structural boards and equip them with our own design solutions, such as the ZA/10/S SLIDE ZA/10/T TWIST closing system or the ZA/10/W WallLOCK shelf mountings.

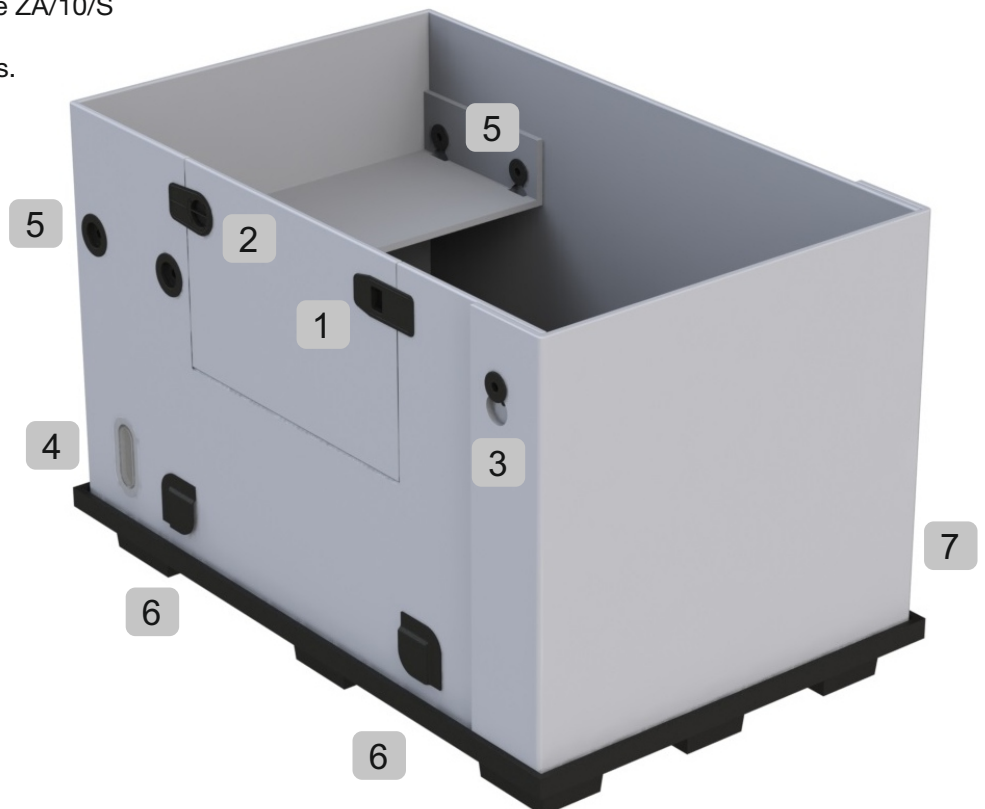
BK/10/PP

PP

BK/10/ESD

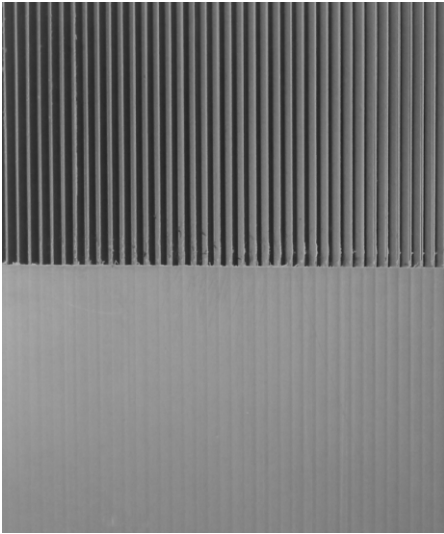


- 1 Closing SLIDE
- 2 TM Closing TWIST
- 3 TM Closing Wall LOCK
- 4 Cargo inspection 5/10mm
- 5 Shelf hanger
- 6 Blockade
- 7 Box



In the production of packaging, we use high-quality hollow and structural boards with thicknesses ranging from 5 to 10 mm, available in various weights. The board material is polypropylene enriched, as needed, with additives that impart specific properties, such as electrostatic discharge (ESD) protection.

HOLLOW-CORE BOARD FOR PACKAGING



Hollow-core boards, similar to corrugated cardboard, have a structure with numerous air-filled channels, yet they are made of polypropylene (PP). This material is resistant to water, chemicals of various types and weather conditions. It does not require special tools for processing. Colour coding can be applied to it by direct printing. The standard colour of the board is grey, but it can also be produced in other colours: black, white, yellow, red, blue, etc.

We also offer ESD (Electrostatic Discharge) version of channel plates with a surface resistance of $1 \cdot 10^6 \Omega$ to $1 \cdot 10^8 \Omega$.

SK/5/1000/PP

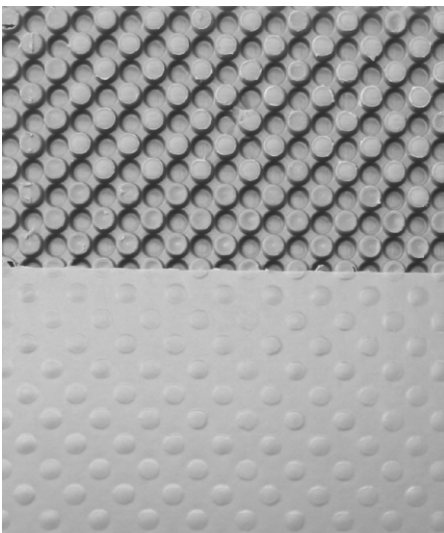
PP

SK/5/1000/ESD



ESD

STRUCTURAL BOARD FOR PACKAGING



Structural Layered Boards (Bubble, Honeycomb): These products combine two essential features – mechanical strength and low weight (grammage). They are made of high-impact polypropylene, ensuring a prolonged lifespan for packaging materials produced from them. The internal structure of the board provides rigidity in all directions. The material is resistant to chemical agents and water.

We also offer structural boards in an ESD version with a surface resistance ranging from $1 \cdot 10^6 \Omega$ to $1 \cdot 10^8 \Omega$. This property ensures proper dissipation of electric charges from the product's surface.

SB/5/1000/PP

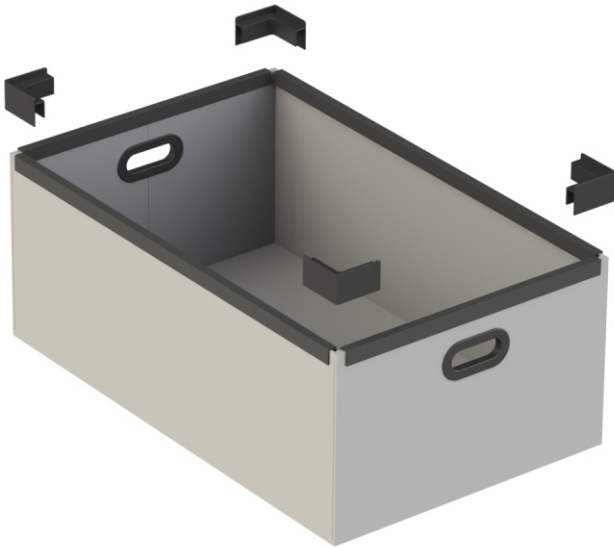
PP

SB/5/1000/ESD



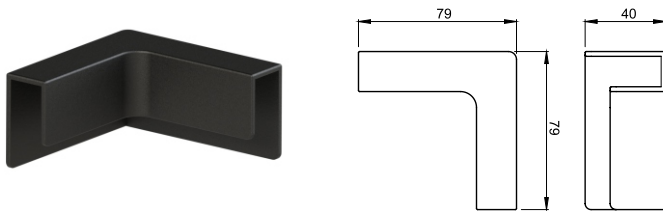
ESD

CORNERS



Corners have two functions in packaging: They protect and allow the stacking of additional load packages. As standard, they are mounted on profiles and attached to the profile and the carton/board with rivets, screws, glue, or welded with air or ultrasound.

CORNER FOR PROFILE U10-U10 SIMPLE



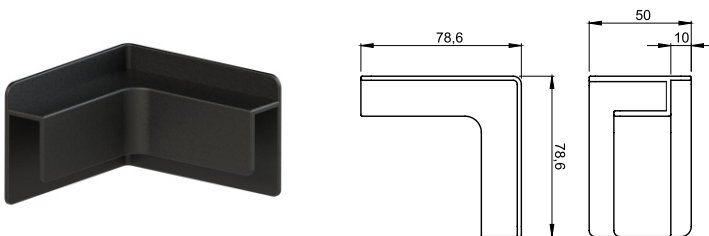
NU/10/P/PP
weight: 0,026 kg/pcs

PP

NU/10/P/ESD
weight: 0,029 kg/pcs



CORNER FOR PROFILE U10-U10 WITH FLANGE



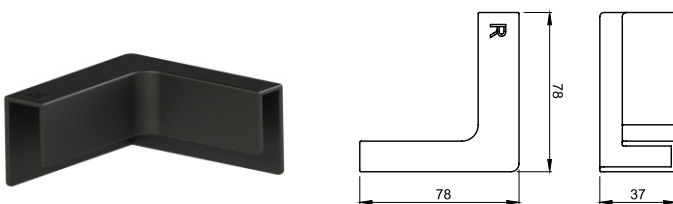
NU/10/K/PP
weight: 0,030 kg/pcs

PP

NU/10/K/ESD
weight: 0,033 kg/pcs



CORNER FOR PROFILE U10-U5 SIMPLE RIGHT



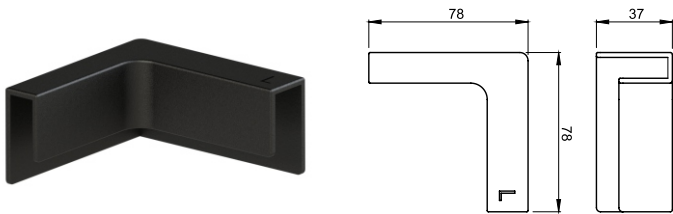
NU/10/5/P/P/PP
weight: 0,024 kg/pcs

PP

NU/10/5/P/P/ESD
weight: 0,028 kg/pcs



CORNER FOR PROFILE U10-U5 SIMPLE LEFT



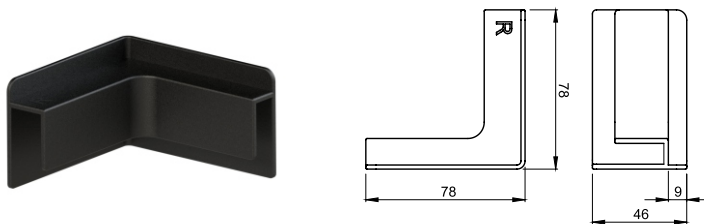
NU/10/5/P/L/PP
weight: 0,024 kg/pcs

PP

NU/10/5/P/L/ESD
weight: 0,028 kg/pcs



CORNER FOR PROFILE U10-U5 WITH FLANGE RIGHT



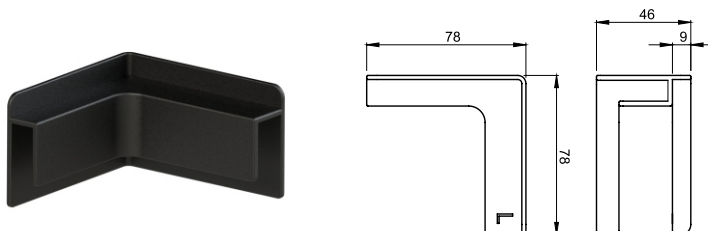
NU/10/5/K/P/PP
weight: 0,028 kg/pcs

PP

NU/10/5/K/P/ESD
weight: 0,030 kg/pcs



CORNER FOR PROFILE U10-U5 WITH FLANGE LEFT



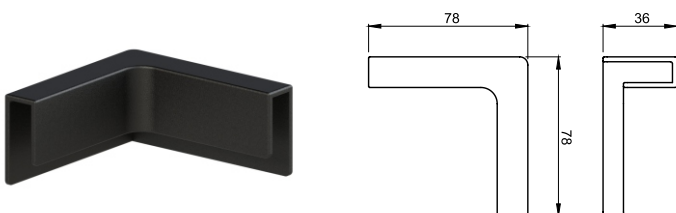
NU/10/5/K/L/PP
weight: 0,028 kg/pcs

PP

NU/10/5/K/L/ESD
weight: 0,030 kg/pcs



CORNER FOR PROFILE U5-U5 SIMPLE



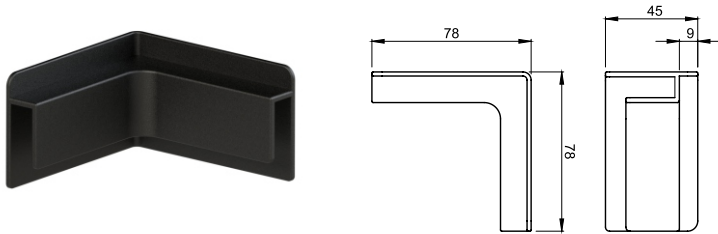
NU/5/P/PP
weight: 0,024 kg/pcs

PP

NU/5/P/ESD
weight: 0,027 kg/pcs



CORNER FOR PROFILE U5-U5 WITH FLANGE



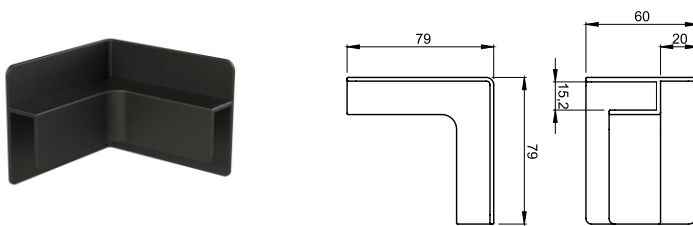
NU/5/K/PP
weight: 0,028 kg/pcs

PP

NU/5/K/ESD
weight: 0,029 kg/pcs



DOUBLE CORNER FOR PROFILE U10-U10 WITH FLANGE



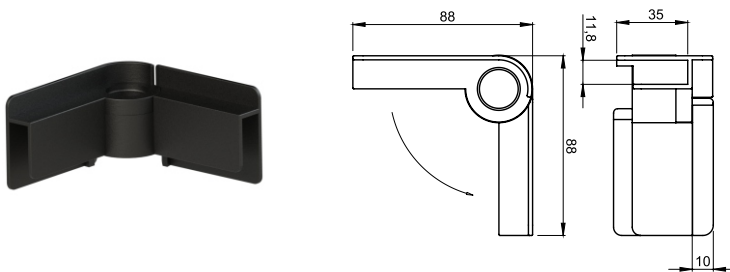
NU/10/2K/PP
weight: 0,034 kg/pcs

PP

NU/10/2K/ESD
weight: 0,036 kg/pcs



FOLDED CORNER FOR PROFILE U7-U7 WITH FLANGE



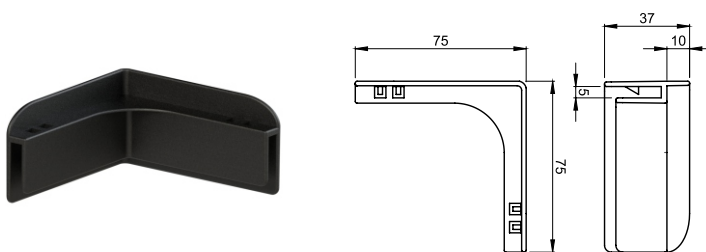
NU/7/K/S/PP
weight: 0,036 kg/pcs

PP

NU/7/K/S/ESD
weight: 0,041 kg/pcs



CORNER FOR CARDBOARD 5/5 MM WITH FLANGE



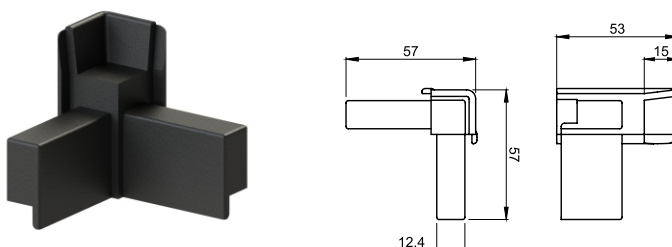
N/5/K/PP
weight: 0,018 kg/pcs

PP

N/5/K/ESD
weight: 0,019 kg/pcs



CORNER FOR PROFILE H12



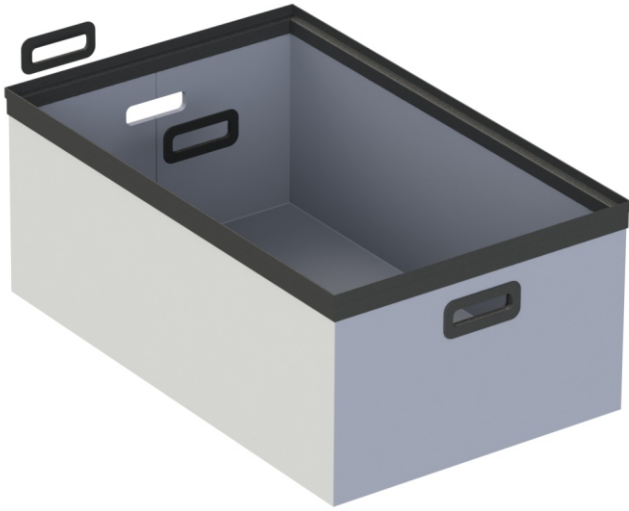
NH/12/PP
weight: 0,018 kg/pcs

PP

NH/12/ESD
weight: 0,021 kg/pcs

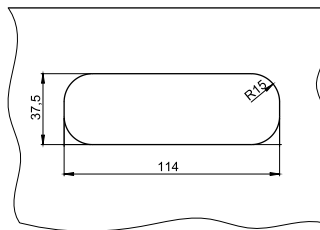
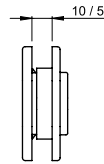
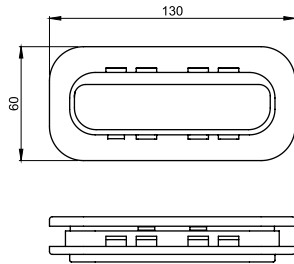


HANDLES



The role of the handle is to enable the load package to be carried safely. Handles are available in various versions, ranging from those crafted from hard materials like polypropylene to others made from soft materials such as TPE or PVC, depending on specific requirements. They can be open, with a flap or closed. Design of handles UR/2-5 and UR/2-7 allows them to be used on corrugated cardboard boxes.

UNIVERSAL HANDLE



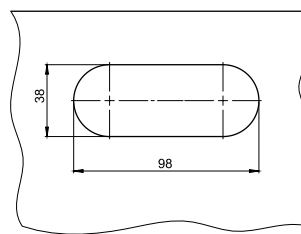
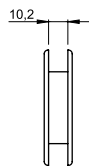
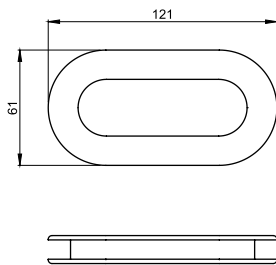
UU/5/10/PP
weight: 0,034 kg/pcs

PP

UU/5/10/ESD
weight: 0,042 kg/pcs



HANDLE O 10 MM OPEN



UO/10/PVC
weight: 0,030 kg/pcs

PVC

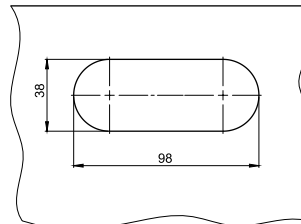
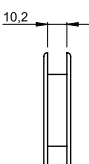
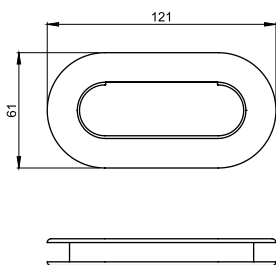
UO/10/ESD
weight: 0,037 kg/pcs



UO/10/TPE
weight: 0,032 kg/pcs

TPE

HANDLE O 10 MM WITH FLAP



UO/10/K/PVC
weight: 0,036 kg/pcs

PVC

UO/10/K/ESD
weight: 0,040 kg/pcs

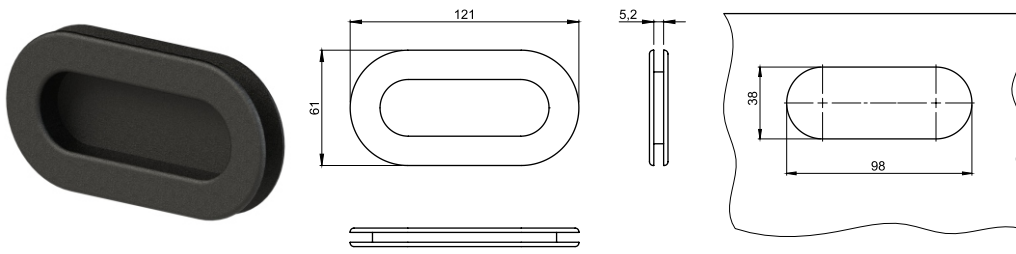


UO/10/K/TPE
weight: 0,032 kg/pcs

TPE

HANDLES

HANDLE O 10 MM CLOSED



UO/10/Z/PVC
weight: 0,037 kg/pcs

PVC

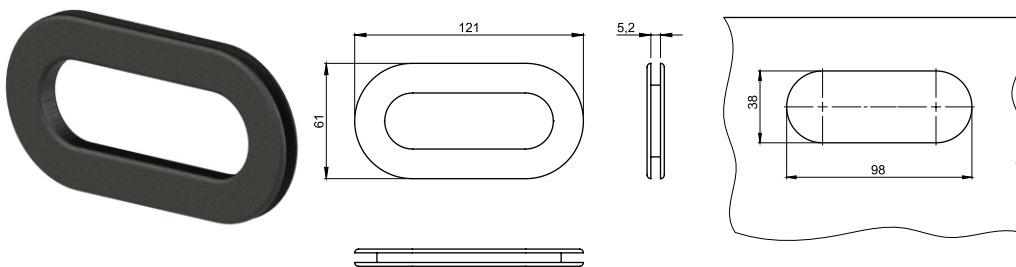
UO/10/Z/ESD
weight: 0,040 kg/pcs



UO/10/Z/TPE
weight: 0,037 kg/pcs

TPE

HANDLE O 5 MM OPEN



UO/5/PVC
weight: 0,024 kg/pcs

PVC

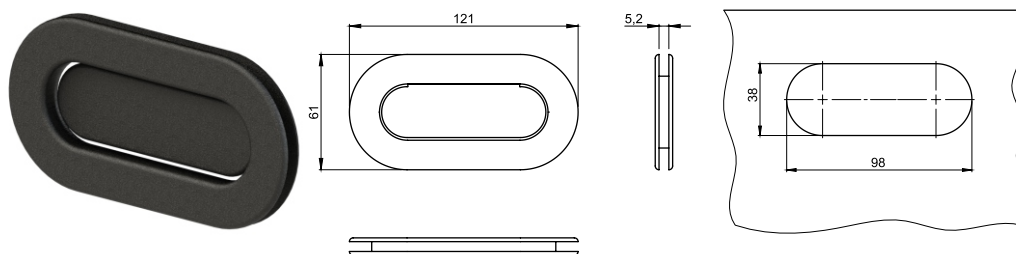
UO/5/ESD
weight: 0,026 kg/pcs



UO/5/TPE
weight: 0,022 kg/pcs

TPE

HANDLE O 5 MM WITH FLAP



UO/5/K/PVC
weight: 0,030 kg/pcs

PVC

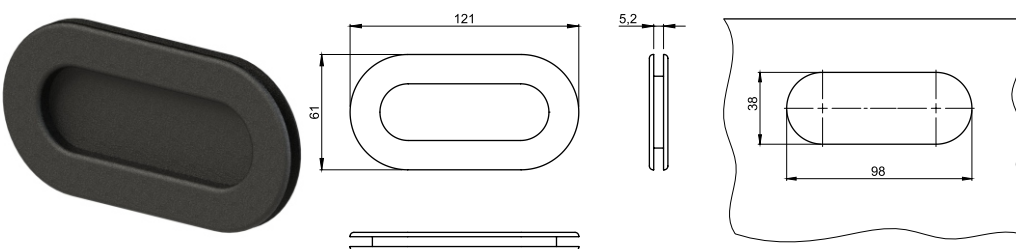
UO/5/K/ESD
weight: 0,030 kg/pcs



UO/5/K/TPE
weight: 0,026 kg/pcs

TPE

HANDLE O 5 MM CLOSED



UO/5/Z/PVC
weight: 0,032 kg/pcs

PVC

UO/5/Z/ESD
weight: 0,034 kg/pcs

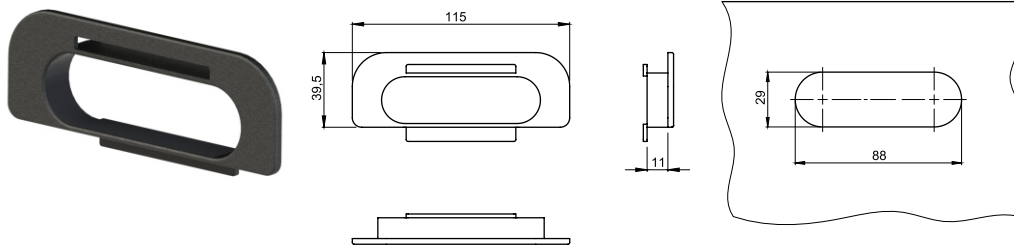


UO/5/Z/TPE
weight: 0,032 kg/pcs

TPE

HANDLES

ONE PIECE HANDLE



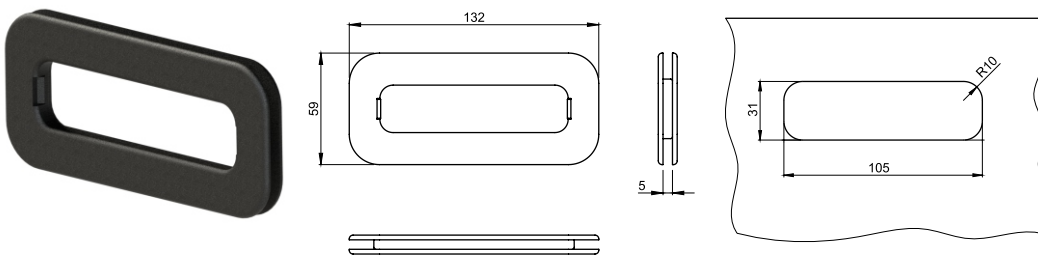
UJ/11/PP
weight: 0,010 kg/pcs

PP

UJ/11/ESD
weight: 0,011 kg/pcs



HANDLE P 5 MM OPEN



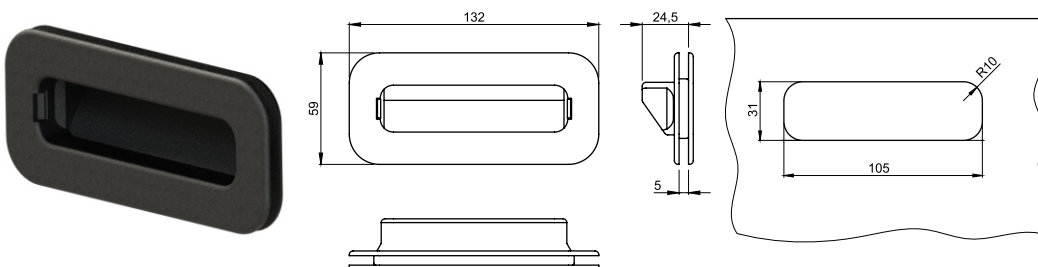
UP/5/PP
weight: 0,028 kg/pcs

PP

UP/5/ESD
weight: 0,028 kg/pcs



HANDLE P 5 MM CLOSED



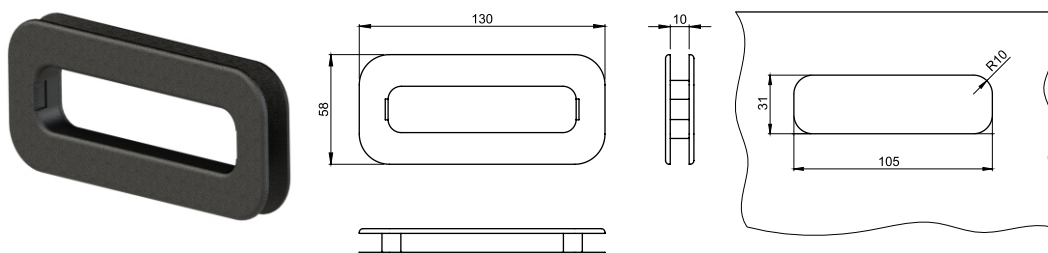
UP/5/Z/PP
weight: 0,034 kg/pcs

PP

UP/5/Z/ESD
weight: 0,034 kg/pcs



HANDLE P 10 MM OPEN



UP/10/PP
weight: 0,028 kg/pcs

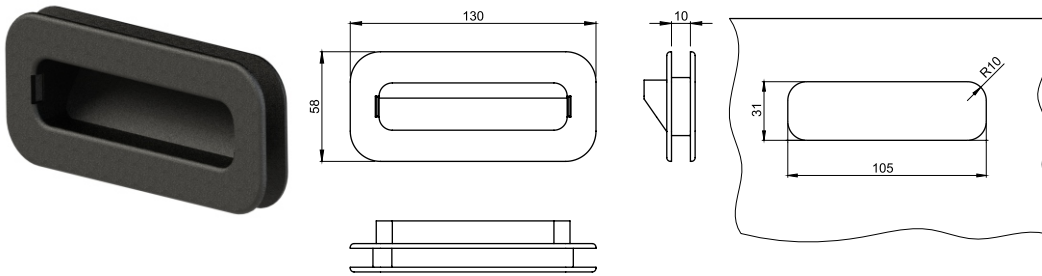
PP

UP/10/ESD
weight: 0,032 kg/pcs



HANDLES

HANDLE P 10 MM CLOSED



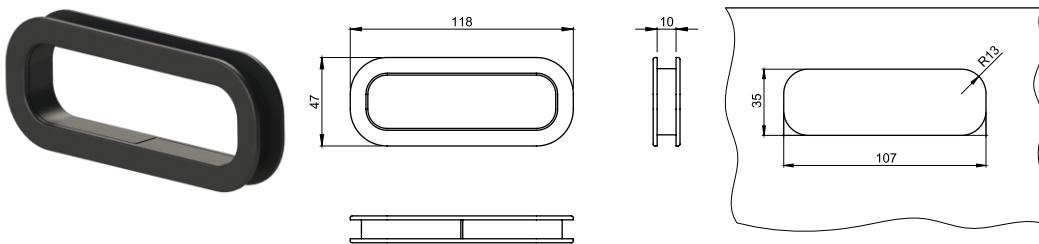
UP/10/Z/PP
weight: 0,032 kg/pcs

PP

UP/10/Z/ESD
weight: 0,036 kg/pcs



SYMETRICAL HANDLE



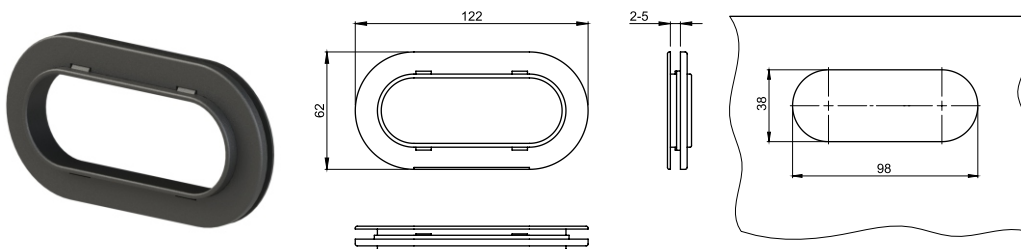
US/10/PP
weight: 0,016 kg/pcs

PP

US/10/ESD
weight: 0,016 kg/pcs



ADJUSTABLE HANDLE 2-5 MM



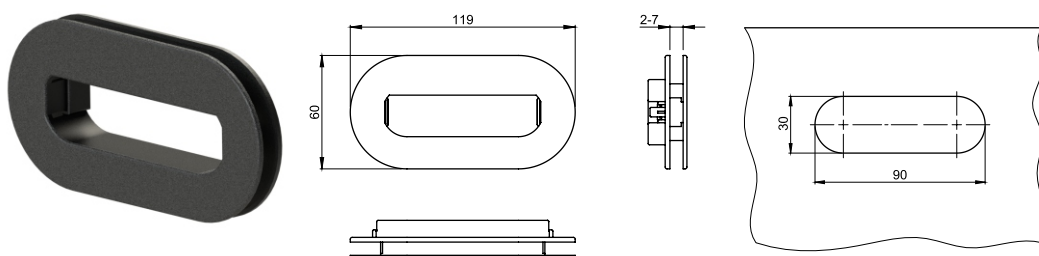
UR/2-5/PP
weight: 0,016 kg/pcs

PP

UR/2-5/ESD
weight: 0,018 kg/pcs



ADJUSTABLE HANDLE 2-7 MM



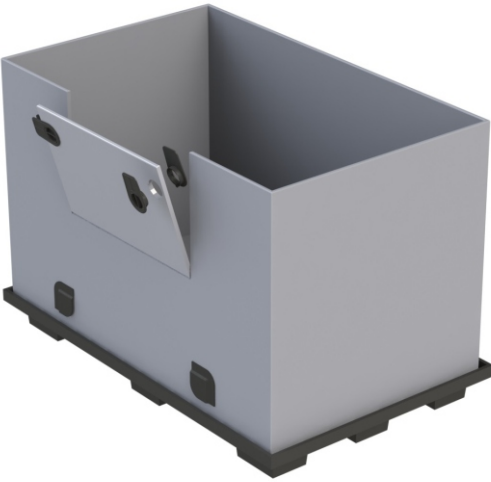
UR/2-7/PP
weight: 0,024 kg/pcs

PP

UR/2-7/ESD
weight: 0,025 kg/pcs

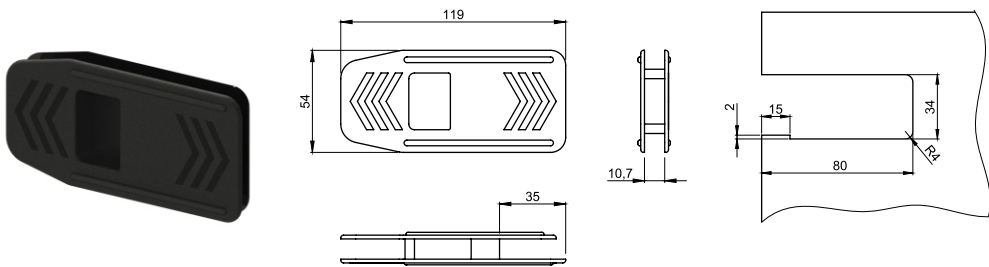


CLOSING



These BigBox packaging components allow for easy handling of loading windows, installation of walls or shelves inside the packaging, and eliminate the need for Velcro stickers. They can be recycled together with the packaging wrapper. They are made of rigid PP or ESD.

SLIDE



ZA/10/S/PP

weight: 0,024 kg/pcs

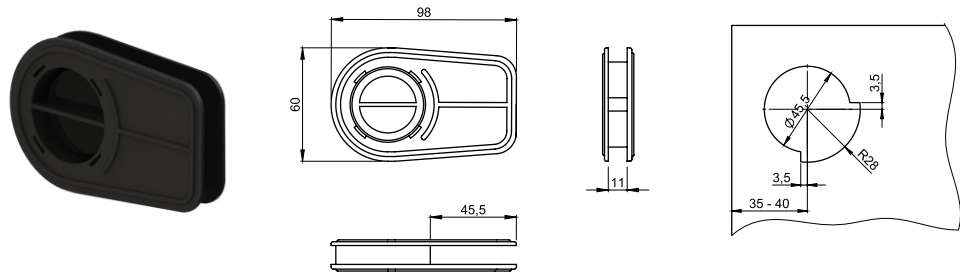
PP

ZA/10/S/ESD

weight: 0,026 kg/pcs



TWIST



ZA/10/T/PP

weight: 0,026 kg/pcs

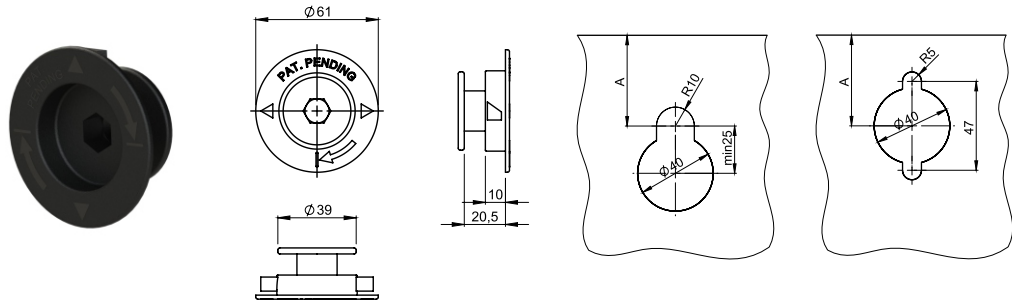
PP

ZA/10/T/ESD

weight: 0,028 kg/pcs



WALL LOCK



ZA/10/W/PP

weight: 0,014 kg/pcs

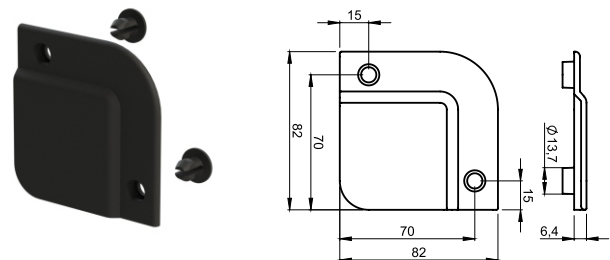
PP

ZA/10/W/ESD

weight: 0,018 kg/pcs



BLOCKADE



ZA/10/B/PP

weight: 0,020 kg/pcs

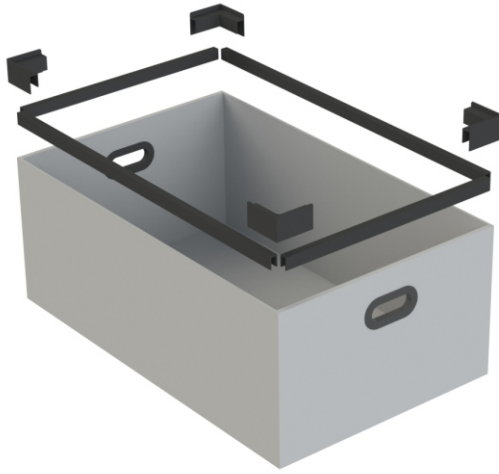
PP

ZA/10/B/ESD

weight: 0,022 kg/pcs



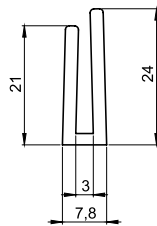
PROFILES U



The role of U-profiles is to protect the edges of the box, strengthen the structure, and ease the installation of corners. Depending on requirements, they can be manufactured with boards that are 5 or 10 mm thick, using PP or ESD materials.

If required, suitable markings such as logos, numbering, and so forth, can be applied to them. The 2U profile, used for edge protection on 10 mm cartons, enables sheets of board to be joined together. This allows us to create larger packaging volumes or make pull-out loading windows for BigBoxes.

PROFILE U3 TYPE A



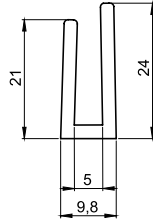
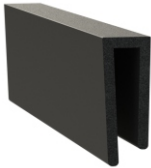
PU/3/A/PP
weight: 0,114 kg/lm

PP

PU/3/A/ESD
weight: 0,116 kg/lm



PROFILE U5 TYPE A



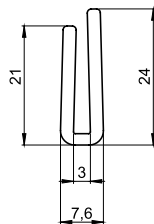
PU/5/A/PP
weight: 0,116 kg/lm

PP

PU/5/A/ESD
weight: 0,118 kg/lm



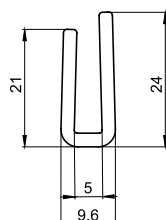
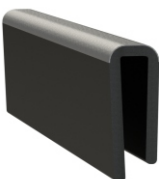
PROFILE U3 TYPE C COEX



PU/3/C/PP^{COEX}
weight: 0,114 kg/lm

PP^{coex}

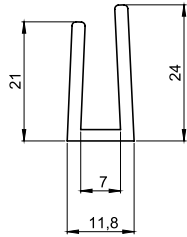
PROFILE U5 TYPE C COEX



PU/5/C/PP^{COEX}
weight: 0,116 kg/lm

PP^{coex}

PROFILE U7 TYPE A



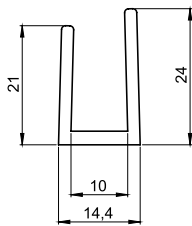
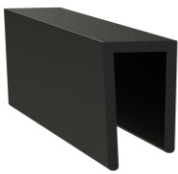
PU/7/A/PP
weight: 0,136 kg/lm

PP

PU/7/A/ESD
weight: 0,140 kg/lm



PROFILE U10 TYPE A



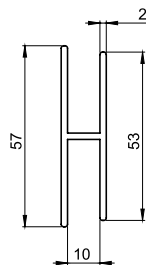
PU/10/A/PP
weight: 0,140 kg/lm

PP

PU/10A/ESD
weight: 0,144 kg/lm



PROFILE 2U



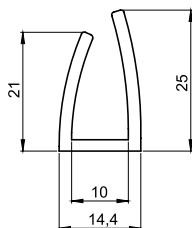
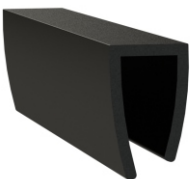
P2U/10/PP
weight: 0,290 kg/lm

PP

P2U/10/ESD
weight: 0,292 kg/lm



PROFILE U10 TYPE B



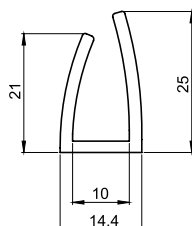
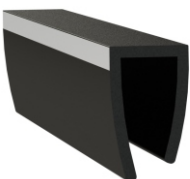
PU/10/B/PP
weight: 0,132 kg/lm

PP

PU/10/B/ESD
weight: 0,134 kg/lm



PROFILE U10 TYPE B REFLEX

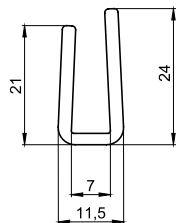


PU/10/B/PP_{REFLEX}
weight: 0,132 kg/lm

PP

PROFILES U

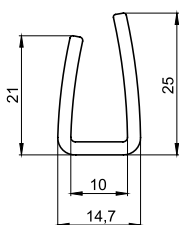
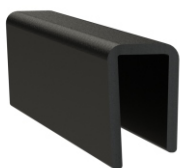
PROFILE U7 TYPE C



PU/7/C/PP^{COEX}
weight: 0,132 kg/lm

PP^{coex}

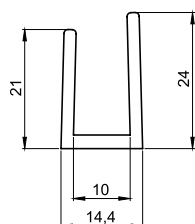
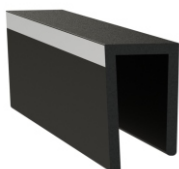
PROFILE U10 TYPE C



PU/10/C/PP^{COEX}
weight: 0,140 kg/lm

PP^{coex}

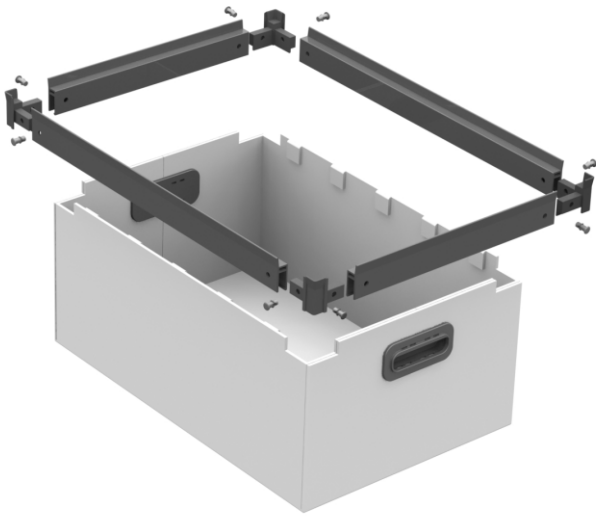
PROFILE U10 TYPE A REFLEX



PU/10/A/PP^{REFLEX}
weight: 0,132 kg/lm

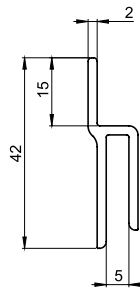
PP^{reflex}

PROFILES H



The main purpose of H-profiles is to protect the edges of the box and to allow stacking of loads. We manufacture them in PP, PVC or ESD versions. Profiles with chambers and made from special PP or PVC are designed for welded frames. Our innovative H12 system (consisting of frame, corner, and rivet components) has been developed to revolutionize frame construction. This system not only reduces transportation costs for components but also accelerates the manufacturing process of the frame itself, ultimately delivering a stable and robust construction solution.

PROFILE H5



PH/5/PP

weight: 0,170 kg/lm

PP

PH/5/ESD

weight: 0,175 kg/lm

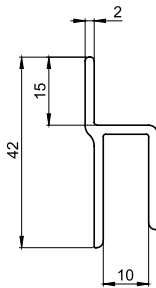
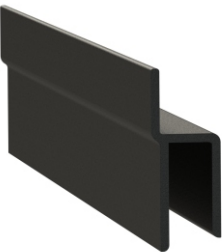


PH/5/PVC

weight: 0,246 kg/lm

PVC

PROFILE H10



PH/10/PP

weight: 0,180 kg/lm

PP

PH/10/ESD

weight: 0,185 kg/lm

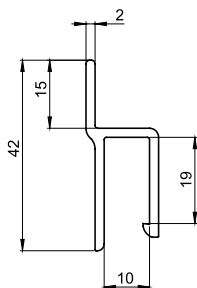


PH/10/PVC

weight: 0,254 kg/lm

PVC

PROFILE H10 WITH CLIP



PH/10/Z/PP

weight: 0,180 kg/lm

PP

PH/10/Z/ESD

weight: 0,185 kg/lm

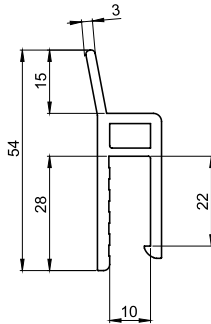


PH/10/Z/PVC

weight: 0,254 kg/lm

PVC

PROFILE H10 WITH CHAMBER, SERRATED AND CLIP



PH/10/KXZ/PP
weight: 0,274 kg/lm

PP

PH/10/KXZ/ESD
weight: 0,280 kg/lm

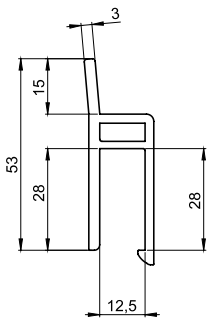


ESD

PH/10/KXZ/PVC
weight: 0,517 kg/lm

PVC

PROFILE H12 REINFORCED WITH CHAMBER AND CLIP



PH/12/KZW/PP
weight: 0,291 kg/lm

PP

PH/12/KZW/ESD
weight: 0,320 kg/lm

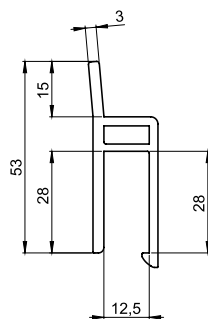


ESD

PH/12/KZW/PVC
weight: 0,520 kg/lm

PVC

PROFILE H12 REINFORCED WITH CHAMBER AND CLIP/VERSION NIT



PH/12/KZW/N/PP
weight: 0,291 kg/lm

PP

PH/12/KZW/N/ESD
weight: 0,320 kg/lm

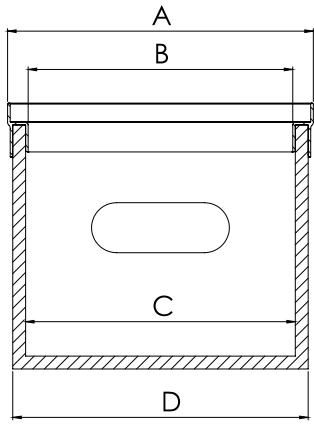


ESD

PH/12/KZW/N/PVC
weight: 0,520 kg/lm

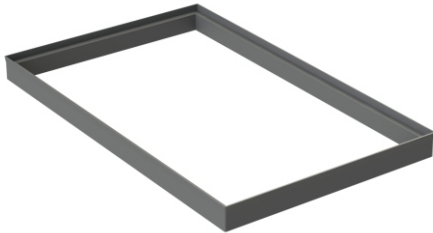
PVC

FRAMES



Depending on the construction requirements, we make ready-to-use protective frames for 5 or 10 mm cartons. The frames are made from H-profiles. In constructions where the profile is joined around the perimeter by welding, we use H-profiles with a chamber. For folding frames we use our proprietary H12 corner and rivet profile.

FRAME H10 WITH CLIP/WITH CHAMBER, SERRATE AND CLIP



RH/10/KXZ/PP

PP

RH/10/KXZ/PVC

PVC

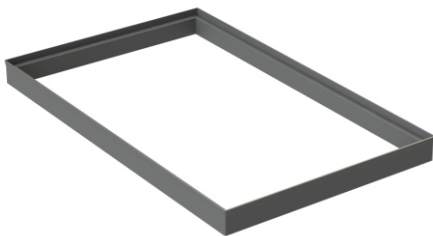
RH/10/Z/PP

PP

RH/10/Z/PVC

PVC

FRAME H12 REINFORCED WITH CHAMBER AND CLIP



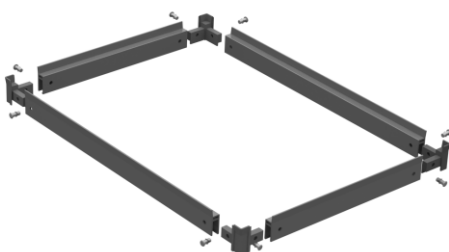
RH/12/KZW/PP

PP

RH/12/KZW/PVC

PVC

FRAME H12 REINFORCED WITH CHAMBER AND CLIP WITH CORNERS H12 CONNECTED BY RIVETS



RH/12/NH/12/N/PP

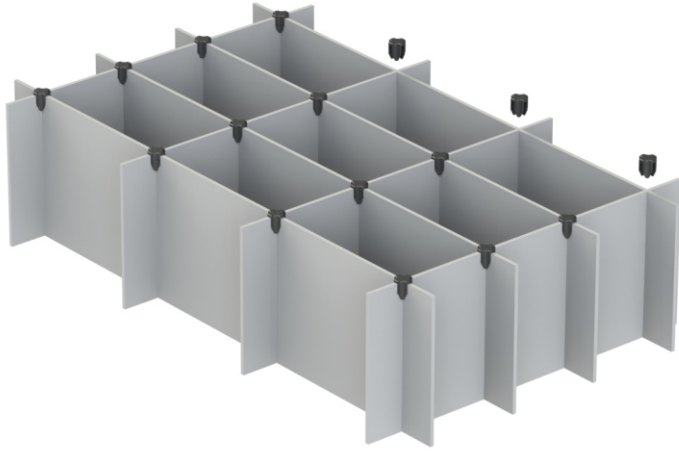
PP

RH/12/NH/12/N/ESD  ESD

RH/12/NH/12/N/PVC

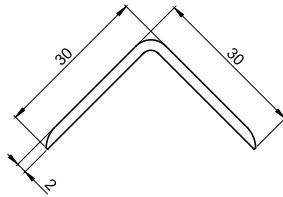
PVC

ADDITIONAL ELEMENTS



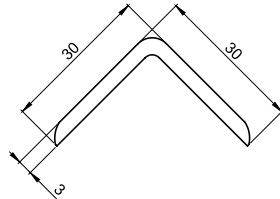
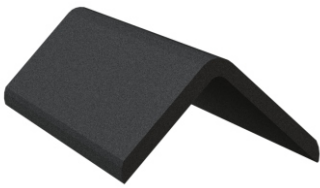
We manufacture a number of elements that increase the functionality and convenience of the packaging. Flexible clips or fixing elements give stiffness to the partition walls / gratings, inspection gives the possibility to monitor the level or condition of the load, side corners strengthen the packaging structure. The kedra / biza profile is used to secure the edges of fabrics used as fillings in transport packaging.

ANGLE 2 mm / 3 mm



ANGLE 2 mm

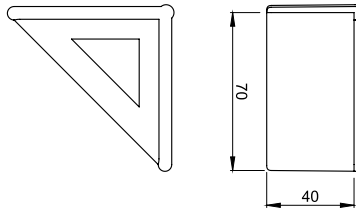
K/2/PP weight: 0,150 kg/lm	PP
K/2/ESD weight: 0,132 kg/lm	ESD
K/2/PVC weight: 0,150 kg/lm	PVC



ANGLE 3 mm

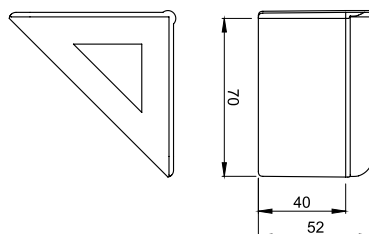
K/3/PP weight: 0,155 kg/lm	PP
K/3/ESD weight: 0,140 kg/lm	ESD
K/3/PVC weight: 0,155 kg/lm	PVC

CORNER GUARD SIMPLE



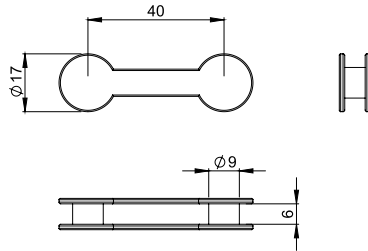
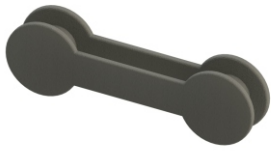
ZN/P/PP weight: 0,018 kg/pcs	PP
ZN/P/ESD weight: 0,019 kg/pcs	ESD

CORNER GUARD WITH FLANGE



ZN/K/PP weight: 0,018 kg/pcs	PP
ZN/K/ESD weight: 0,020 kg/pcs	ESD

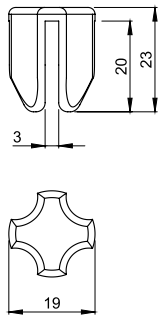
POSITIONING CLIPS



EU/5C/TPE
weight: 0,002 kg/pcs

TPE

POSITIONING ELEMENT 3 MM



EU/3/PP

weight: 0,002 kg/pcs

PP

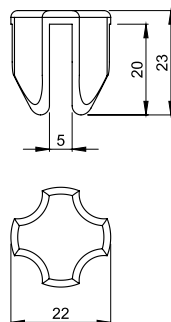
EU/3/ESD

weight: 0,002 kg/pcs



ESD

POSITIONING ELEMENT 5 MM



EU/5/PP

weight: 0,004 kg/pcs

PP

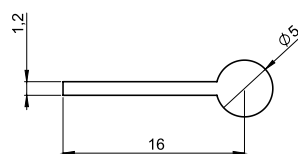
EU/5/ESD

weight: 0,004 kg/pcs



ESD

RIGID ROD KEDRA/BIZA



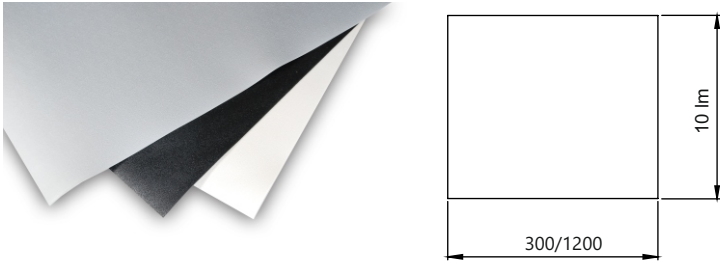
KK/5/PVC

weight: 0,054 kg/lm

PVC

ADDITIONAL ELEMENTS

FLEX ANTISLIPPERY 0,3 / 1,2 X 10 LM



AF/1/300/TPE

TPE

AF/1/1200/TPE

TPE

RIGID ROD



P/3/5/8/10/PP

PP

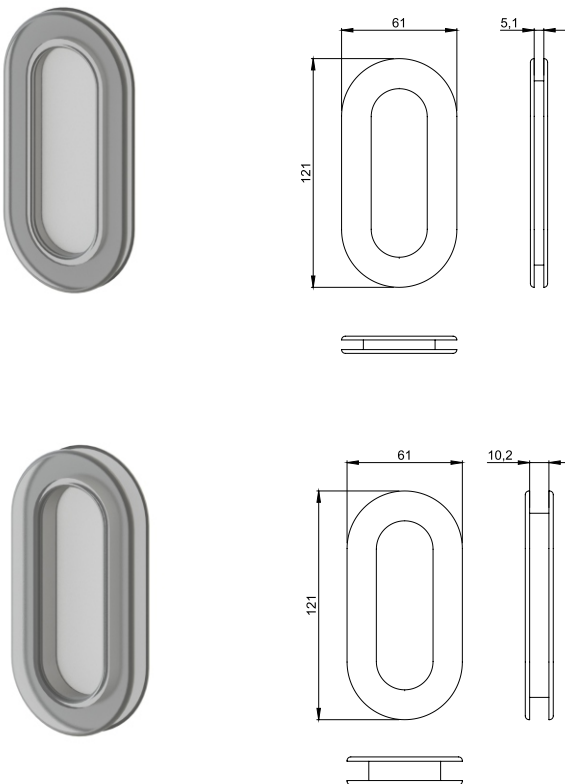
P/3/5/8/10/ESD



P/3/5/8/10/PVC

PVC

CARGO INSPECTION 5 MM / 10 MM



R/5/Z/PVC

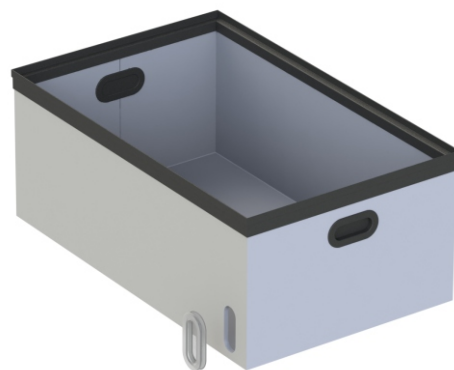
weight: 0,028 kg/pcs

PVC

R/10/Z/PVC




weight: 0,032 kg/pcs

PVC






WEIGHT AND PACKAGING

CORNERS

	PP	 ESD	PVC	TPE	 25x25x50cm	 50x50x50cm
NU/10/P/PP	0,026				100	600
NU/10/P/ESD		0,029			100	600
NU/10/K/PP	0,030				100	600
NU/10/K/ESD		0,033			100	600
NU/10/5/P/P/PP	0,024				100	600
NU/10/5/P/P/ESD		0,028			100	600
NU/10/5/P/L/PP	0,024				100	600
NU/10/5/P/L/ESD		0,028			100	600
NU/10/5/K/P/PP	0,028				100	600
NU/10/5/K/P/ESD		0,030			100	600
NU/10/5/K/L/PP	0,028				100	600
NU/10/5/K/L/ESD		0,030			100	600
NU/5/P/PP	0,024				100	600
NU/5/P/ESD		0,027			100	600
NU/5/K/PP	0,026				100	600
NU/5/K/ESD		0,029			100	600
NU/10/2K/PP	0,034				100	500
NU/10/2K/ESD		0,036			100	600
NU/7/K/S/PP	0,036				100	600
NU/7/K/S/ESD		0,041			100	600
N/5/K/PP	0,018				100	600
N/5/K/ESD		0,019			100	600
NH/12/PP	0,018				100	600
NH/12/ESD		0,021			100	600

HANDLES

	PP	 ESD	PVC	TPE	 25x25x50cm	 50x50x50cm
UU/5/10/PP	0,034				2·200	2·800
UU/5/10/ESD		0,042			2·200	2·800
UO/10/PVC			0,030		250	
UO/10/ESD		0,037			250	
UO/10/TPE				0,032	250	
UO/10/K/PCV			0,036		250	
UO/10/K/ESD		0,040			250	
UO/10/K/TPE				0,032	250	
UO/10/Z/PCV			0,037		250	
UO/10/Z/TPE				0,037	250	
UO/10/Z/ESD		0,040			250	
UO/5/PCV			0,024		400	
UO/5/TPE				0,022	400	
UO/5/ESD		0,026			400	
UO/5/K/PCV			0,030		400	
UO/5/K/TPE				0,026	400	
UO/5/K/ESD		0,030			400	
UO/5/Z/PCV			0,032		400	
UO/5/Z/TPE				0,032	400	
UO/5/Z/ESD		0,034			400	
UJ/11/PP	0,010				200	800
UJ/11/ESD		0,011			200	800
UP/5/PP	0,028				100	500
UP/5/ESD		0,028			100	500
UP/5/Z/PP	0,034				50	500
UP/5/Z/ESD		0,034			50	500
UR/2-5/PP	0,016				2·200	2·1200
UR/2-5/ESD		0,018			2·200	2·1200
UP/10/PP	0,028				100	400
UR/2-7/PP	0,024				100	600
UR/2-7/ESD		0,025			100	600
UP/10/ESD		0,032			100	400
UP/10/Z/PP	0,032				50	300
UP/10/Z/ESD		0,036			50	300
US/10/PP	0,016				100	600
US/10/ESD		0,016			100	600

WEIGHT AND PACKAGING

CLOSINGS

	PP	ESD	PVC	TPE	25x25x50cm	50x50x50cm
ZA/10/S/PP	0,024				200	
ZA/10/S/ESD		0,026			200	
ZA/10/T/PP	0,026				2·200	
ZA/10/T/ESD		0,028			2·200	
ZA/10/W/PP	0,014				200	
ZA/10/W/ESD		0,018			200	
ZA/10/B/PP	0,020				200	
ZA/10/B/ESD		0,022			200	

PROFILES U

	PP	ESD	PVC	TPE	25x25x50cm	50x50x50cm
PU/3/A/PP	0,114					
PU/3/A/ESD		0,116				
PU/5/A/PP	0,116					
PU/5/A/ESD		0,118				
PU/3/C/PPcoex	0,114					
PU/5/C/PPcoex	0,116					
PU/7/A/PP	0,136					
PU/7/A/ESD		0,140				
PU/10/A/PP	0,140					
PU/10/A/ESD		0,144				
P2U/10/PP	0,290					
P2U/10/ESD		0,292				
PU/10/B/PP	0,132					
PU/10/B/ESD		0,134				
PU/10/B/PPreflex	0,132					
PU/7/C/PPcoex	0,132					
PU/10/C/PPcoex	0,140					
PU/10/A/PPreflex	0,132					

PROFILES H

	PP	ESD	PVC	TPE	25x25x50cm	50x50x50cm
PH/5/PP	0,170					
PH/5/ESD		0,175				
PH/5/PCV			0,246			
PH/10/PP	0,180					
PH/10/ESD		0,185				
PH/10/PCV			0,254			
PH/10/Z/PP	0,180					
PH/10/Z/ESD		0,185				
PH/10/Z/PCV			0,254			
PH/10/KXZ/PP	0,274					
PH/10/KXZ/ESD		0,280				
PH/10/KXZ/PCV			0,517			
PH/12/KZW/PP	0,291					
PH/12/KZW/ESD		0,320				
PH/12/KZW/PCV			0,520			
PH/12/KZW/N/PP	0,291					
PH/12/KZW/N/ESD		0,320				
PH/12/KZW/N/PCV			0,520			

WEIGHT AND PACKAGING

ADDITIONAL ELEMENTS

	PP	ESD	PVC	TPE	25x25x50cm	50x50x50cm
ZN/P/PP	0,018				200	800
ZN/P/ESD		0,019			200	800
ZN/K/PP	0,018				200	800
ZN/K/ESD		0,020			200	800
EU/3/PP	0,002				500	
EU/5/PP	0,004				500	
EU/3/ESD		0,002			500	
EU/5/ESD		0,004			500	
R/5/Z/TPE				0,028	400	
R/10/Z/TPE				0,032	400	
K/3/PP	0,155/m					
K/3/ESD		0,140/m				
K/3/PCV			0,155/m			
K/2/PP	0,150/m					
K/2/ESD		0,132/m				
K/2/PCV			0,150/m			
EU/5/C/TPE				0,002	100	
KK/5/PVC			0,054/m			



ul. Powstańców Śląskich 64
42-700 Lubliniec, Poland

phone: +48 34 353 08 31
mobile: +48 667 70 50 30

info@polmarpack.com
www.polmarpack.com

